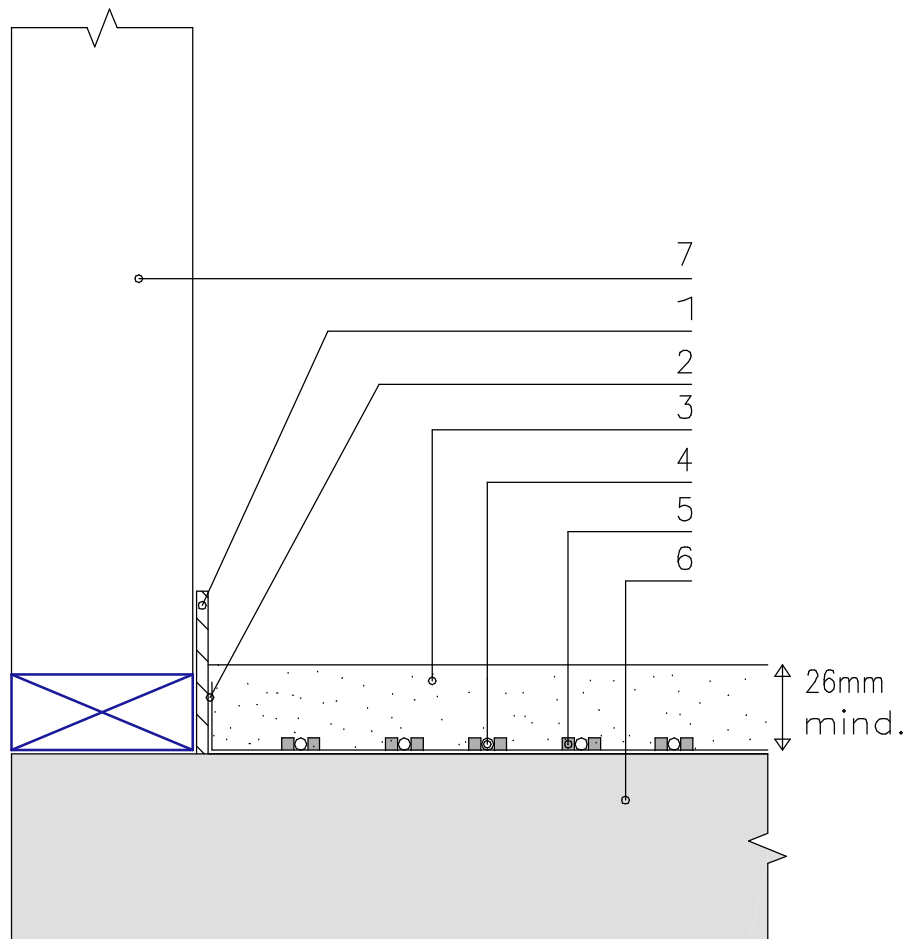


# EM 4193 with Pipe Positioning Sheet



- |   |  |   |   |
|---|--|---|---|
| 1 | Edge expansion strip   | 3 | 4193 Anhydrite screed, minimum thickness of 10mm cover to the hydronic water pipe |
| 2 | Plastic taped to concrete floor then the pipe positioning panel fixed overtop this stop leakage of screed under the pipe positioning panel | 4 | 16mm Hydronic pipe for underfloor heating   |
|   |  | 5 | Pipe positioning panel  |
|   |  | 6 | Concrete floor  |
|   |  | 7 | Timber wall   |